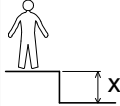
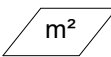


N°		
1	<0.6 m	24.5 m ²

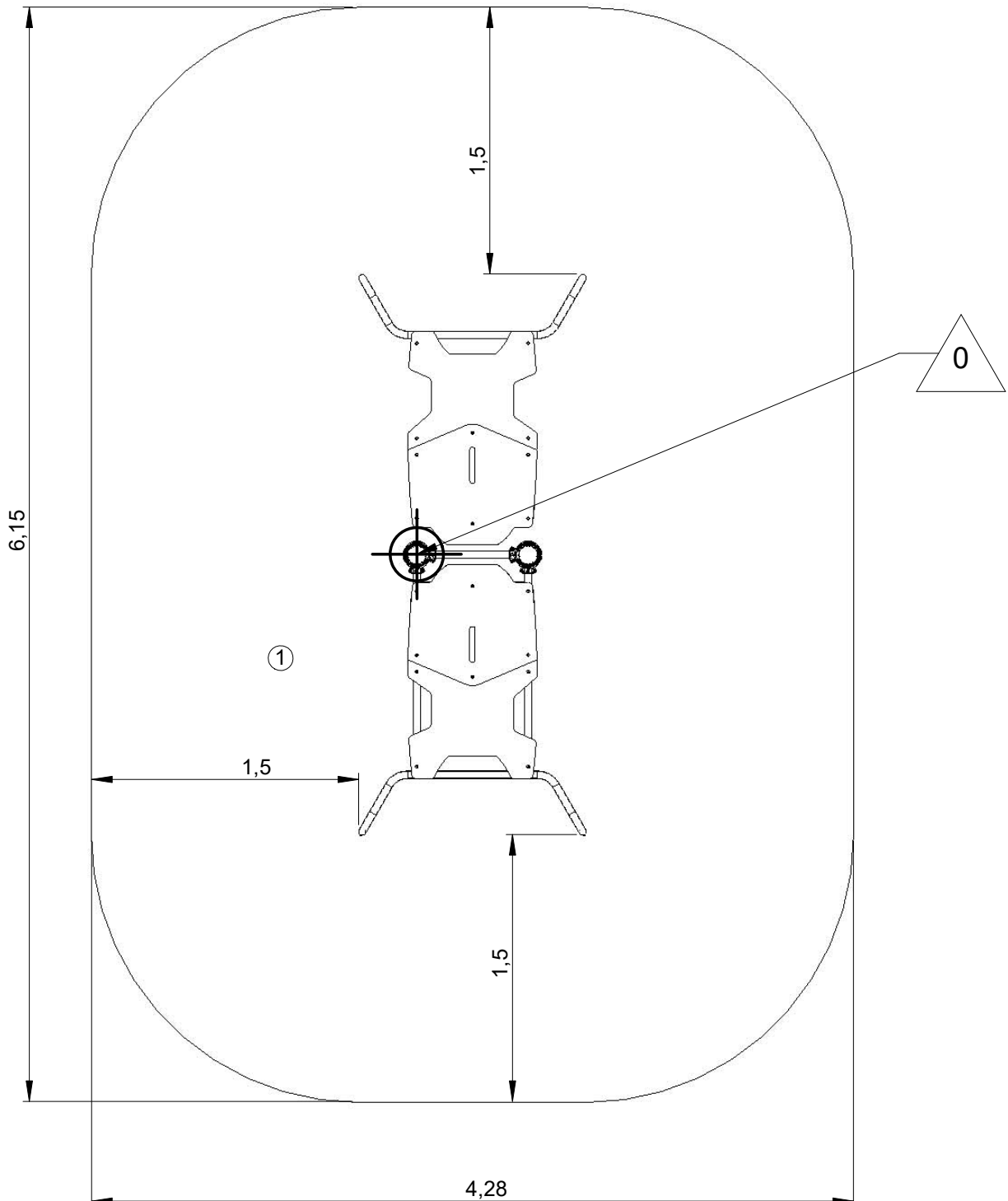
— Zone d'impact
Impact area
Area de impacto
Fallraum
Valzone

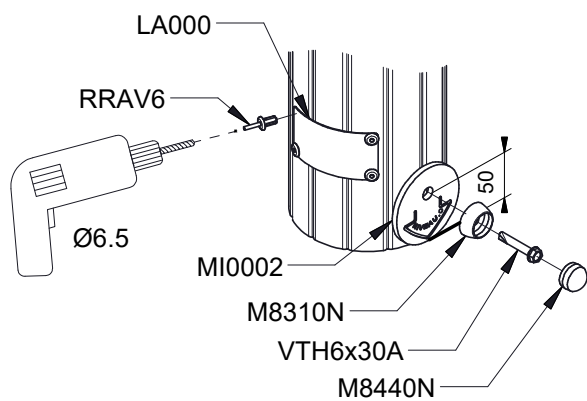
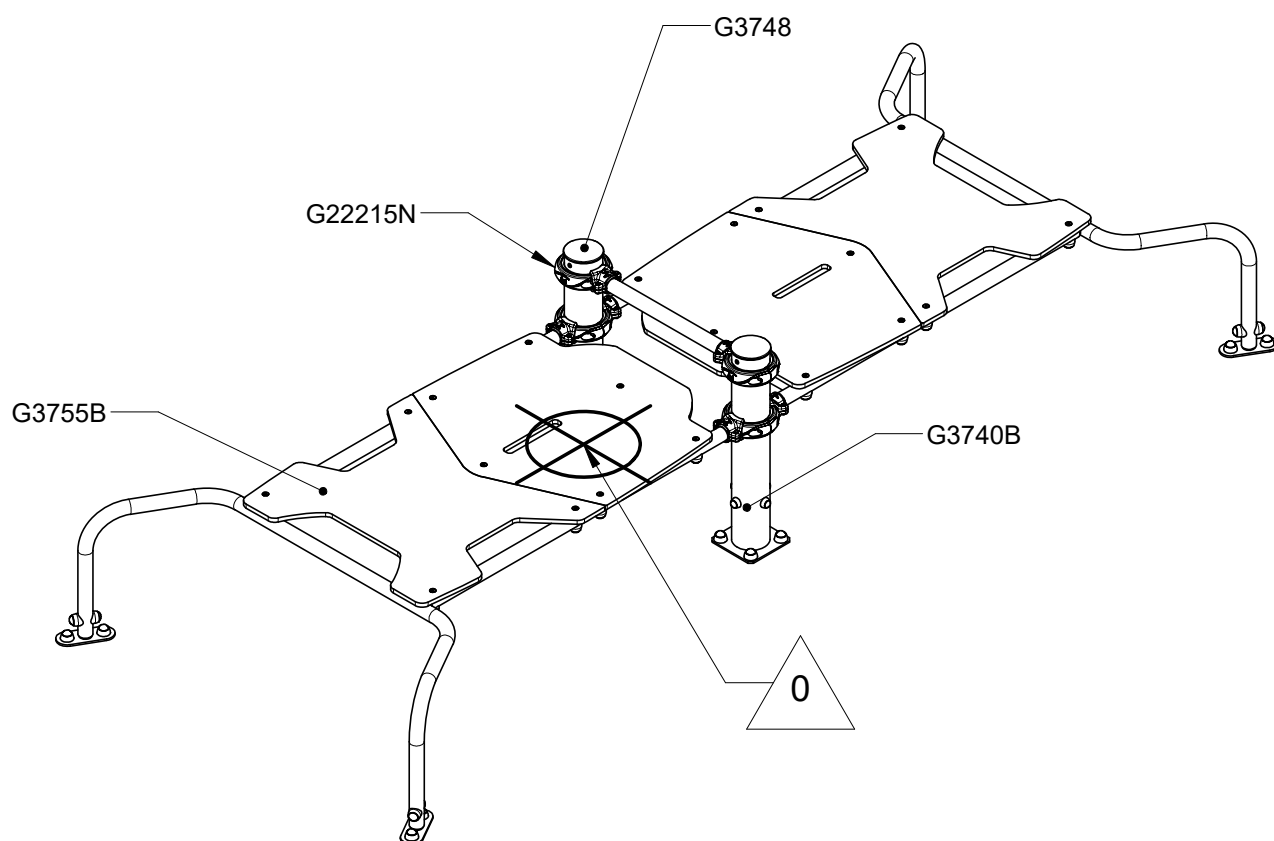


Point de référence
Setting out point
Punto de referencia
Bezugspunkt
Referentiepunt

- - - Espace libre
Free space
Espacio libre
Freiraum
Vrije ruimte

EN16630:2015

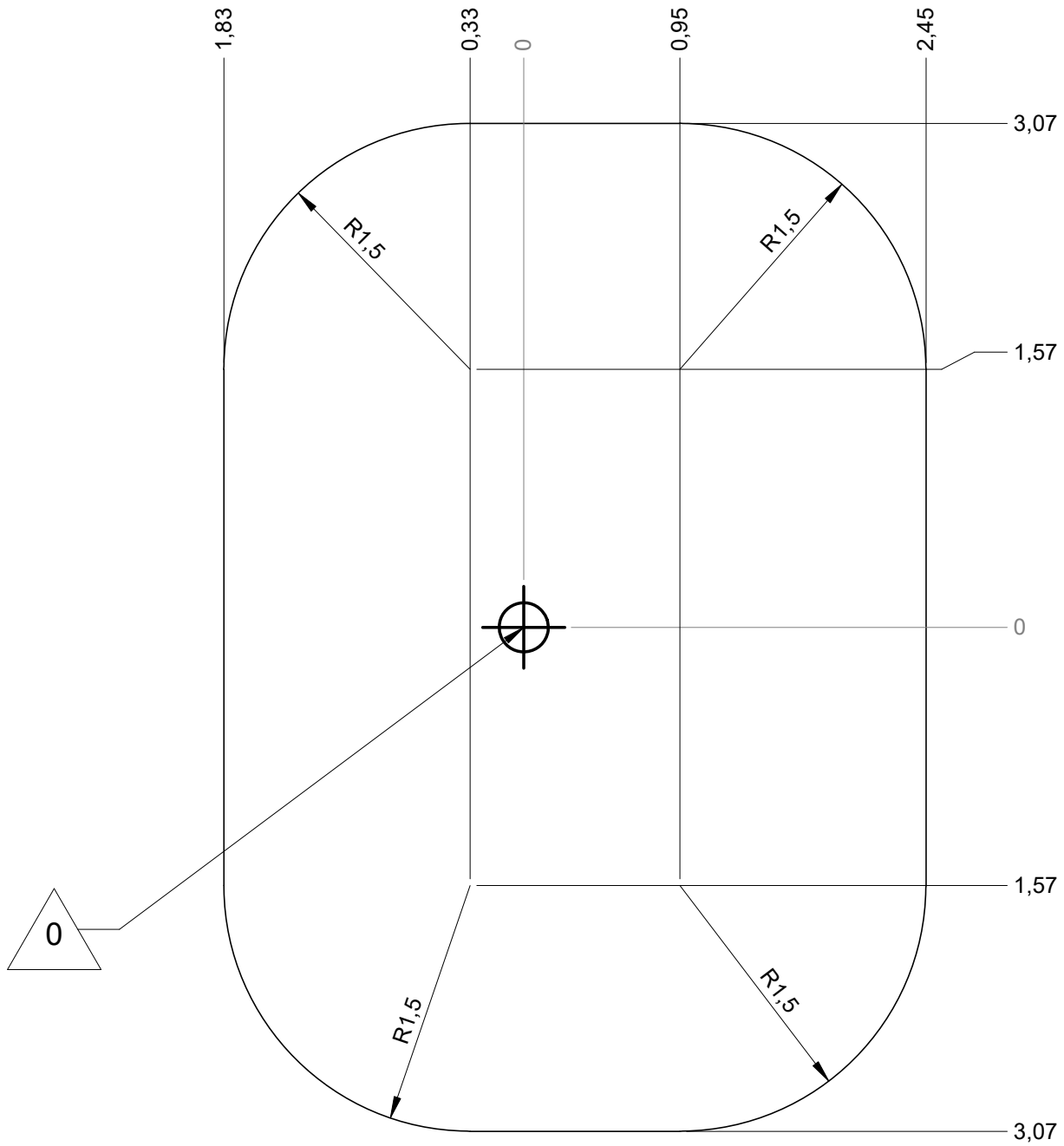




Réf	Qté
G3748	2
G3770	1
G22215N	4
G3740B	2
G3755B	2

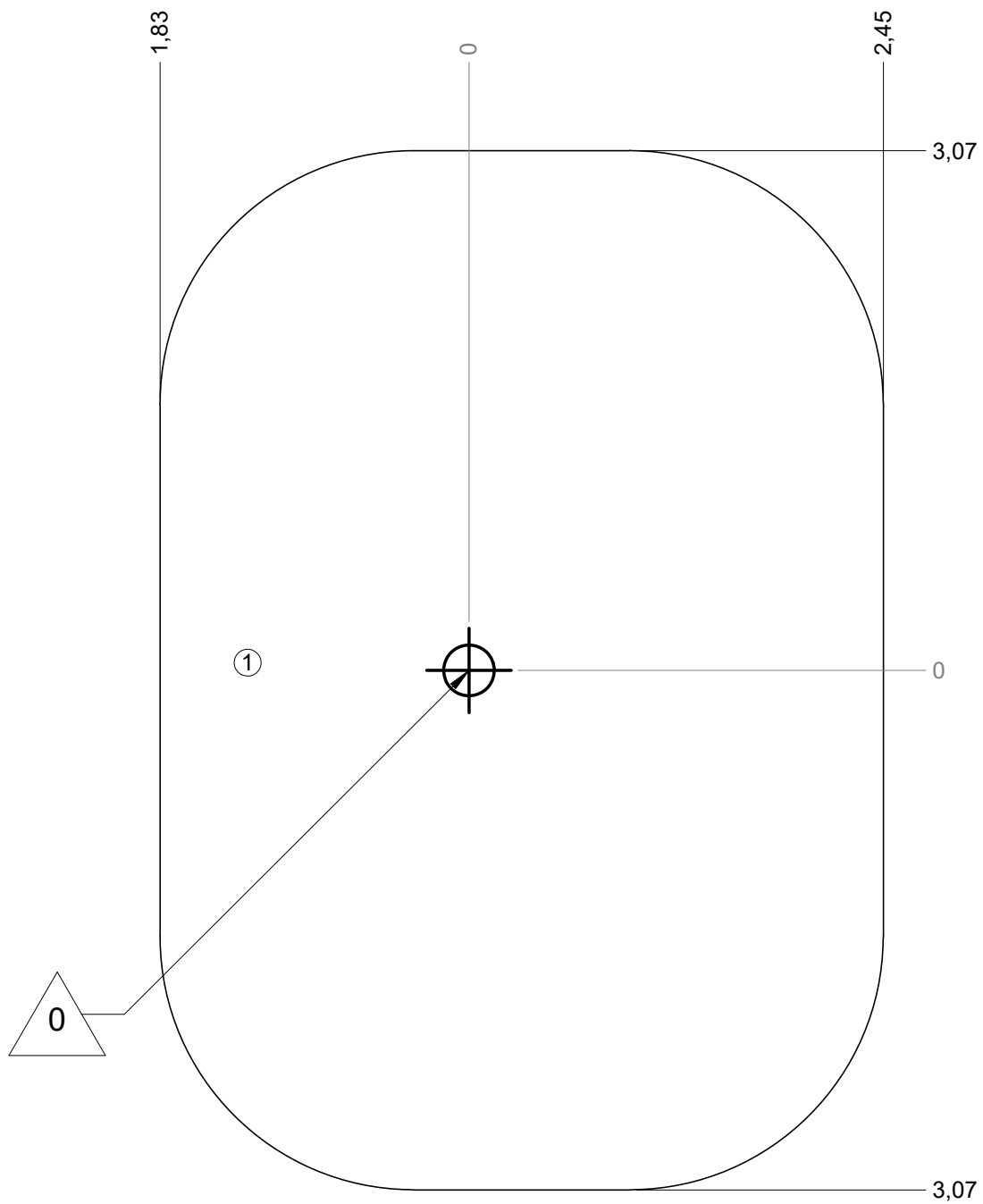
— Zone d'impact
 Impact area
 Area de impacto
 Fallraum
 Valzone

24.5 m²



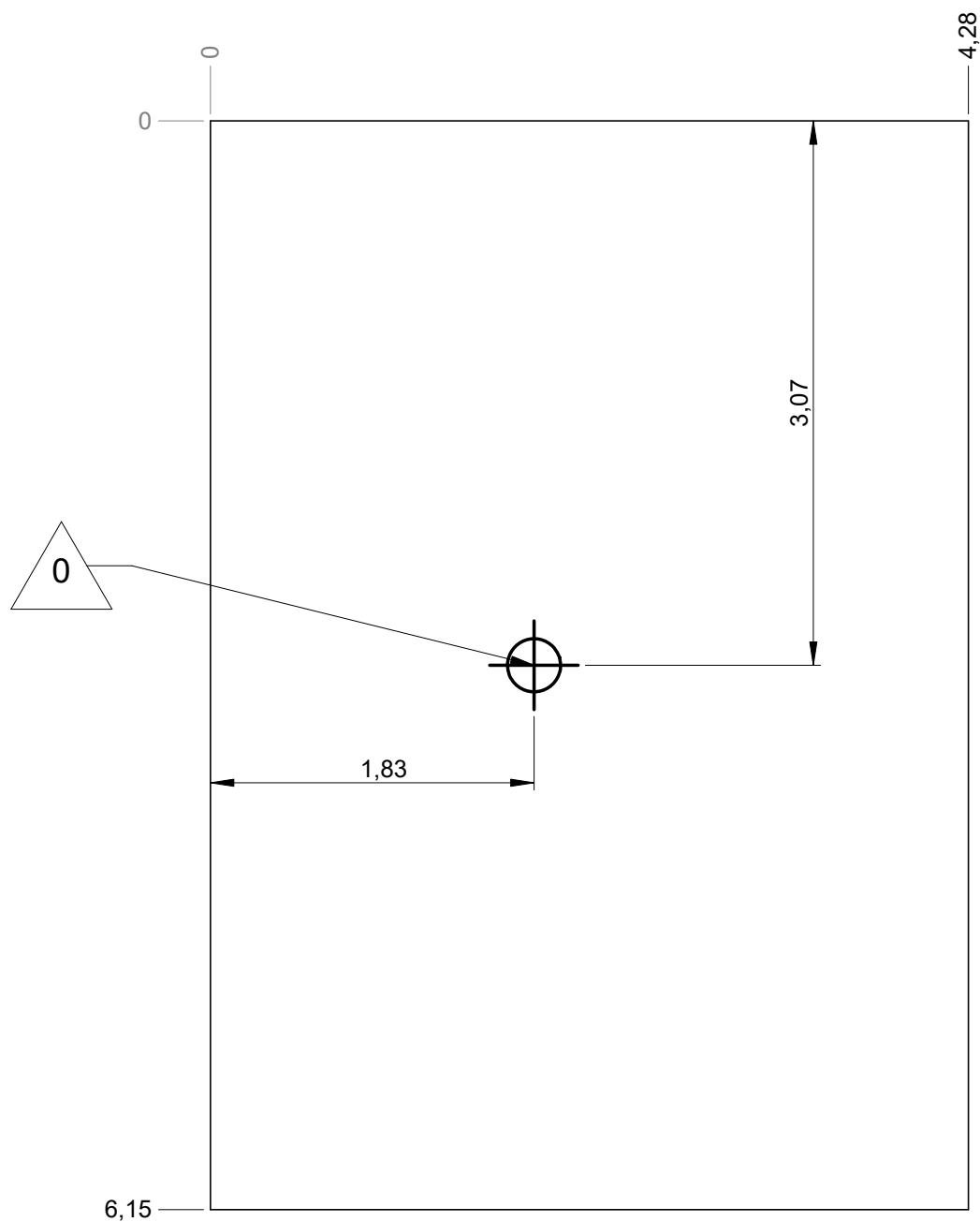
— Sol souple
Wetpour
Caucho continuo
Synthetischer Fallschutz
Gietvloer

24.5 m²

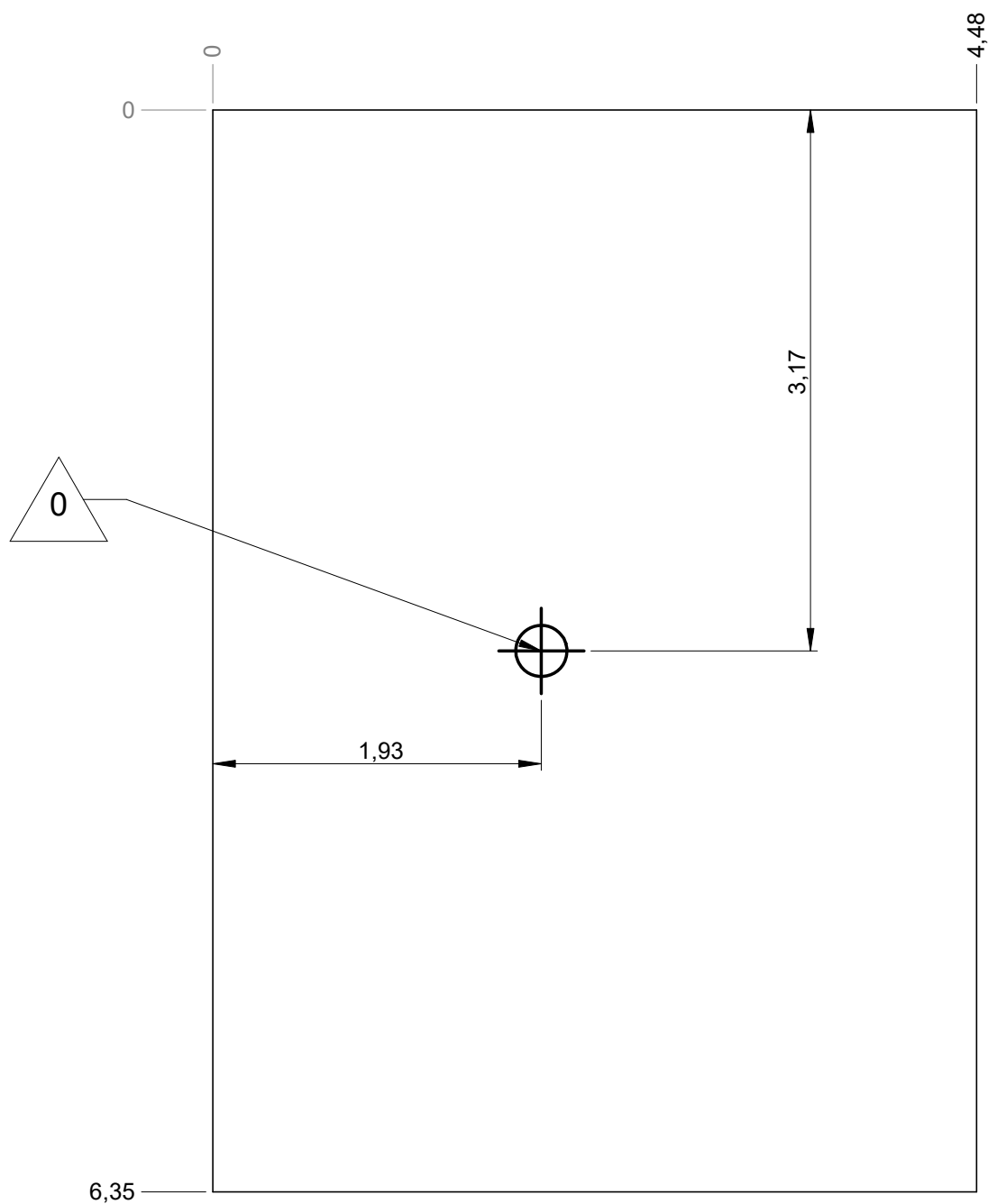


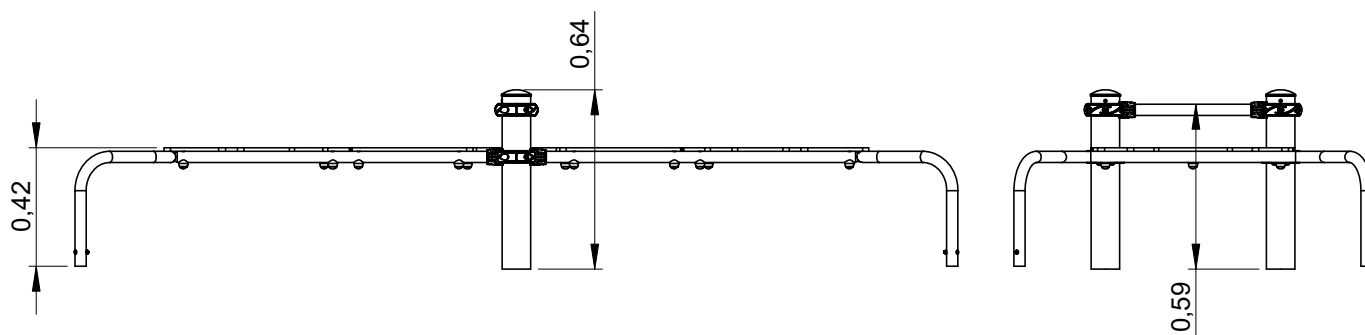
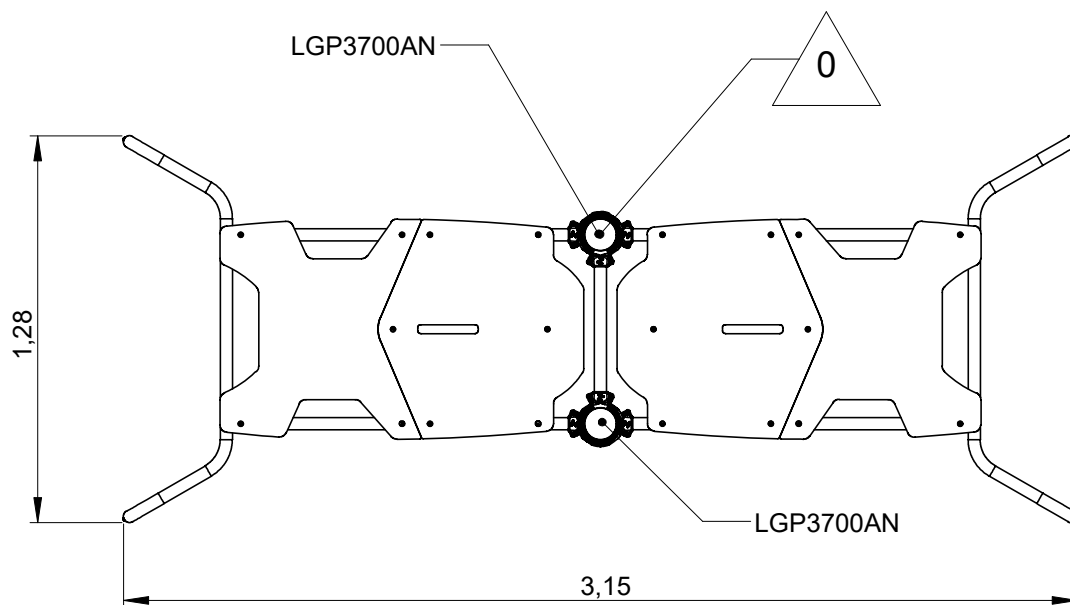
— Dalle béton
 Concrete pad
 Solera de hormigon
 Beton Bodenplatte
 Betonnen bodemplaat

21 m
 27 m²

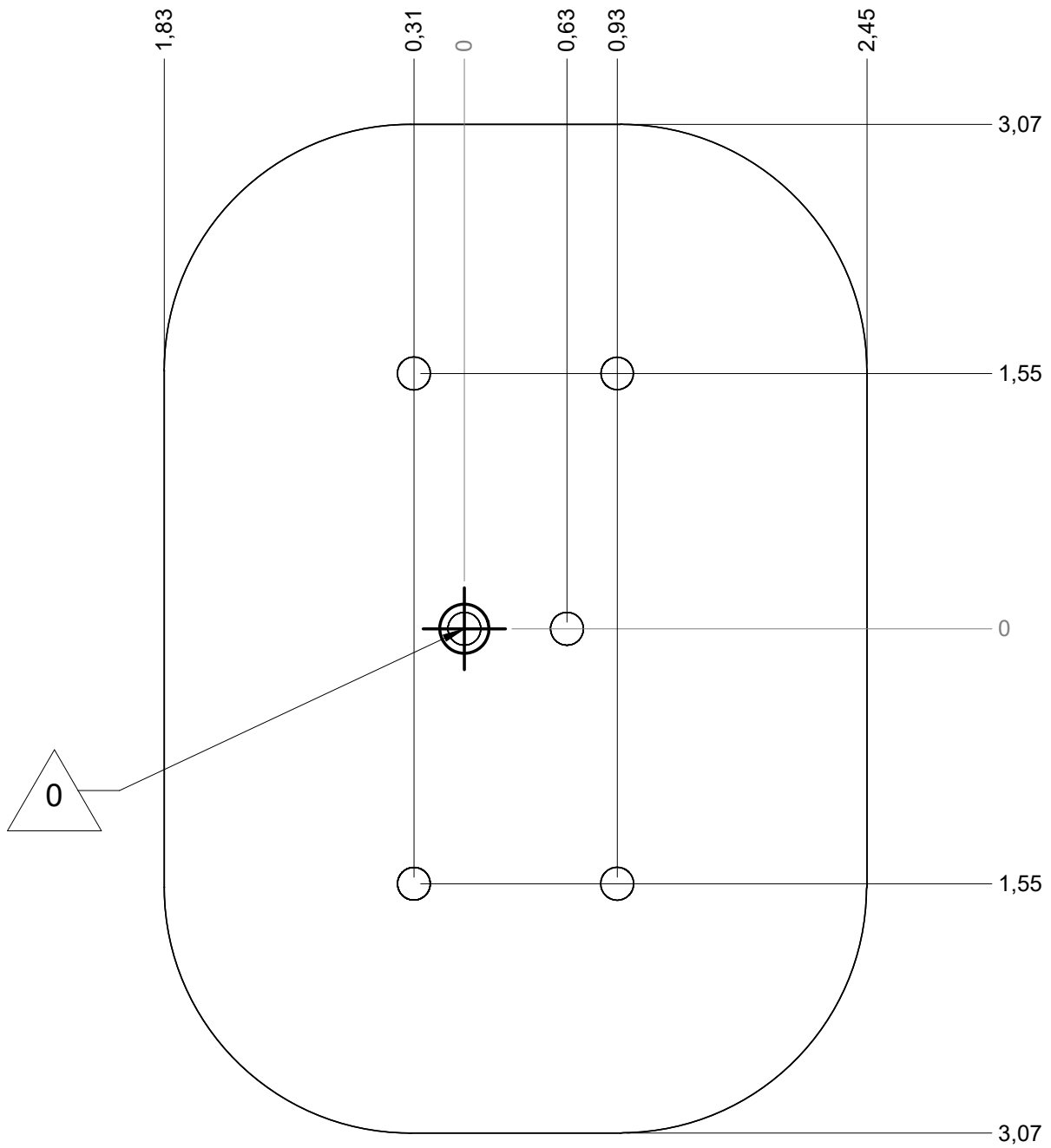




— Sol fluent
 Loos partucule material 23 m
 Arenero
 Loses Bodenmaterial 29 m²
 Los bodemmaterialaal

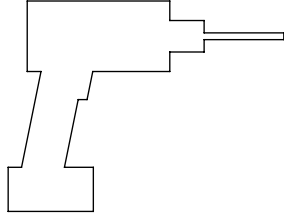




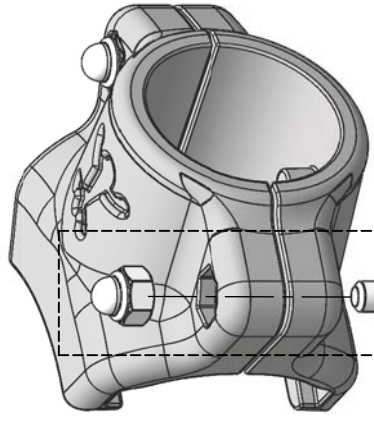
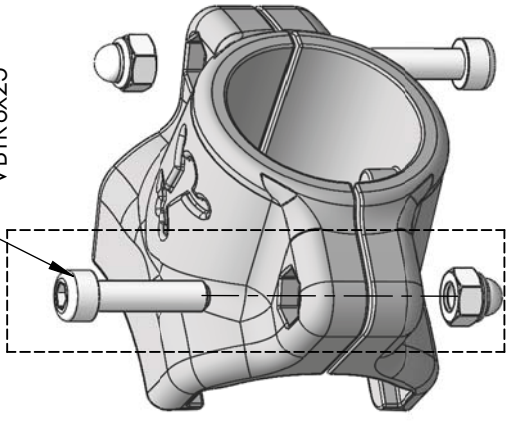
Implantation
 Footing plan
 Implantación
 Fundamentplan
 Funderingstekening



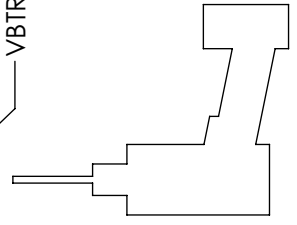
 x2	 1H	 RD14M10
---	--	---



VBTR6x25



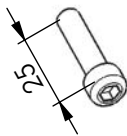
VBTR6x25



Réf	Qté
LA22201xx	2
VBTR6x25	2
VEFBM6	2

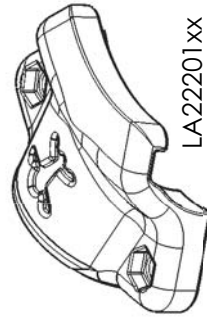


VEFBM6

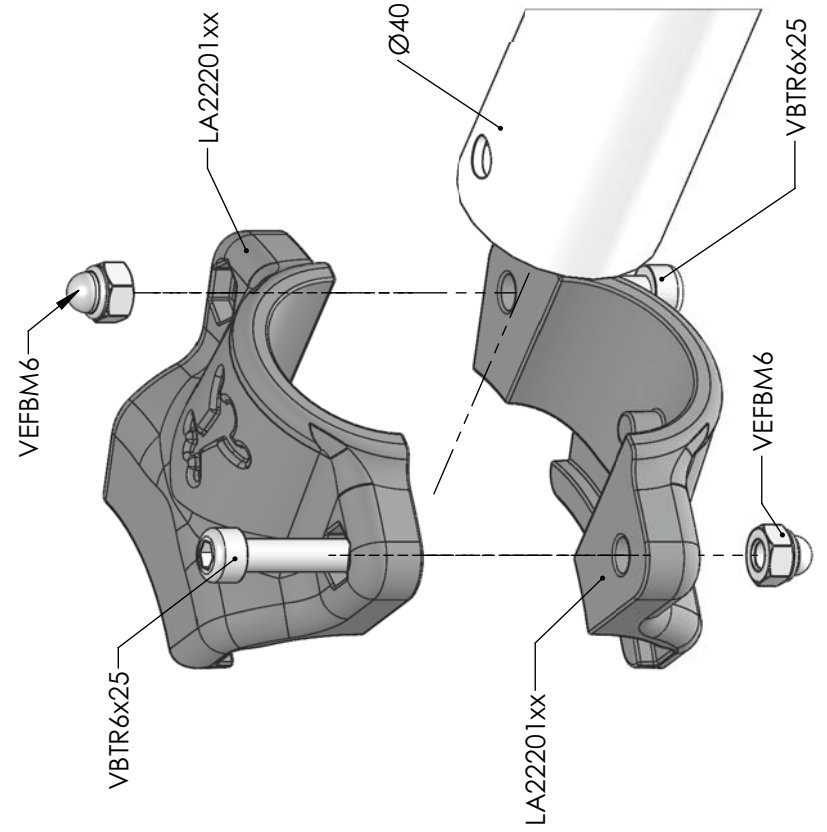
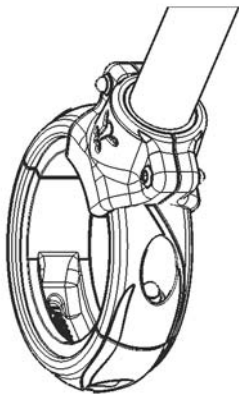


25

VBTR6x25



LA22201xx



VBTR6x25

LA22201xx

Ø40

VBTR6x25

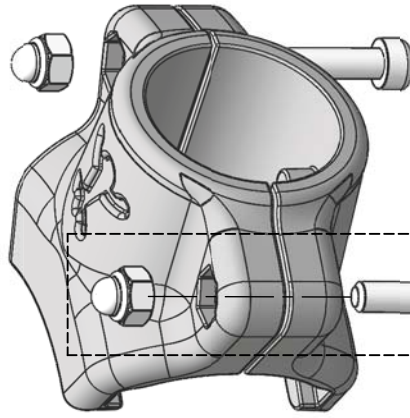
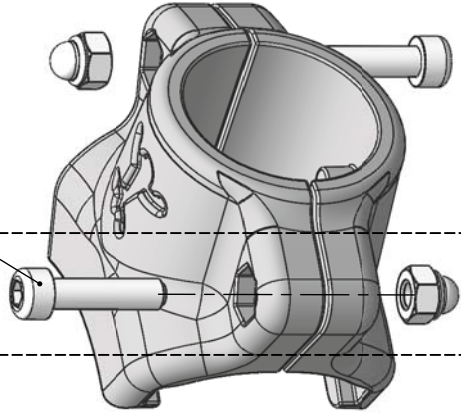
VEFBM6

VEFBM6

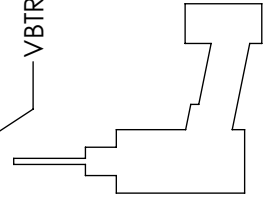
LA22201xx



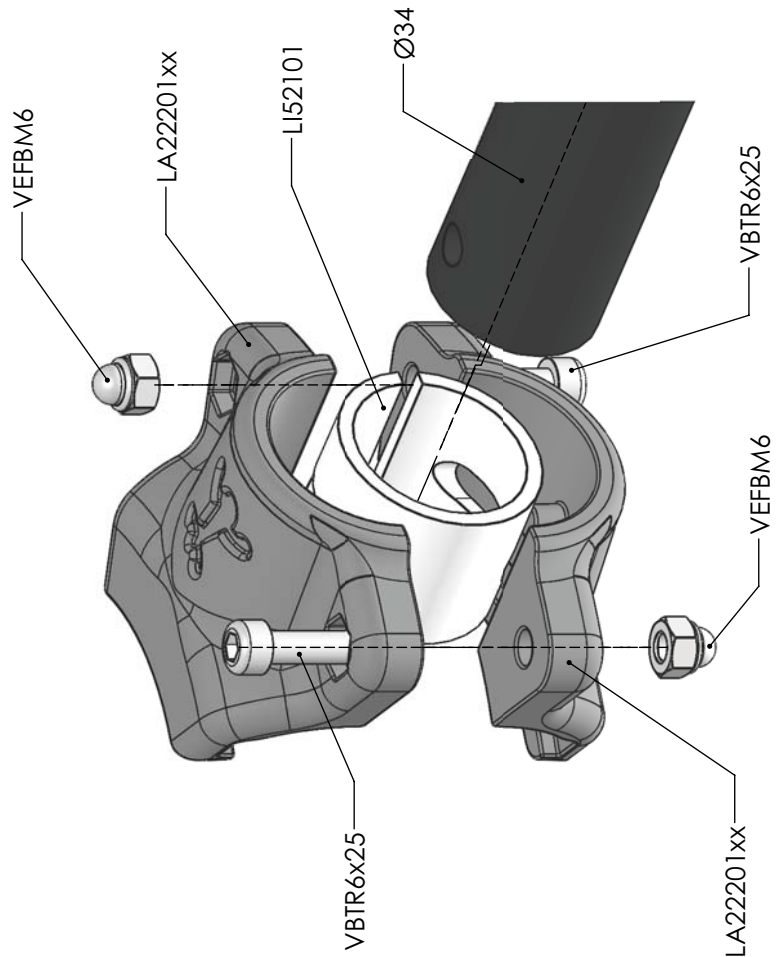
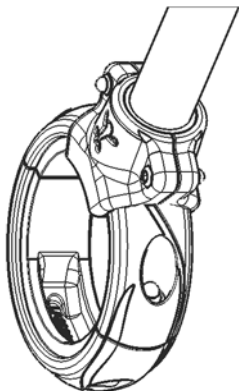
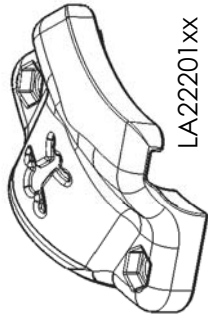
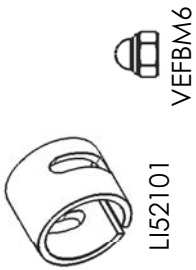
VBTR6x25

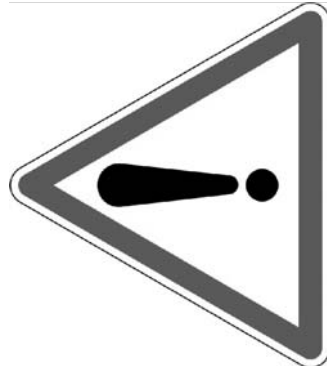
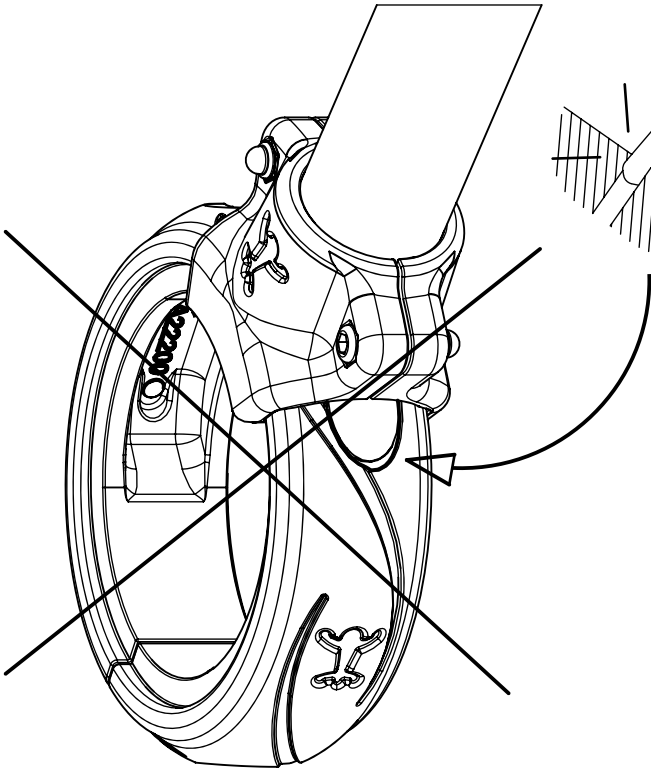


VBTR6x25

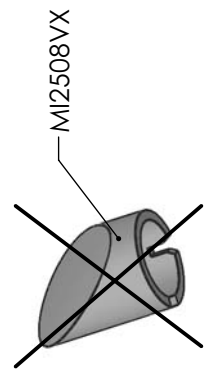
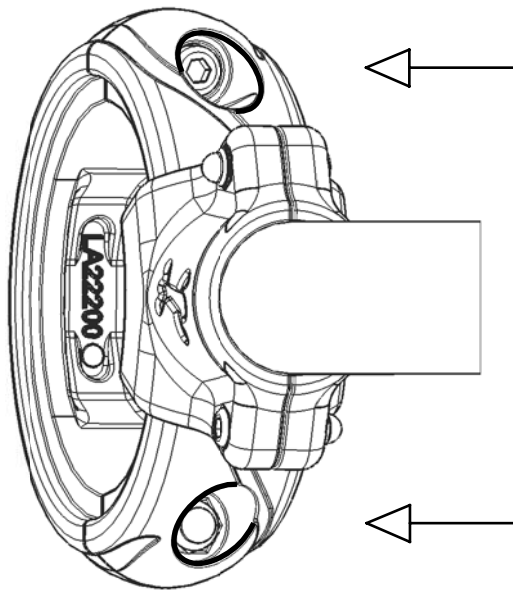
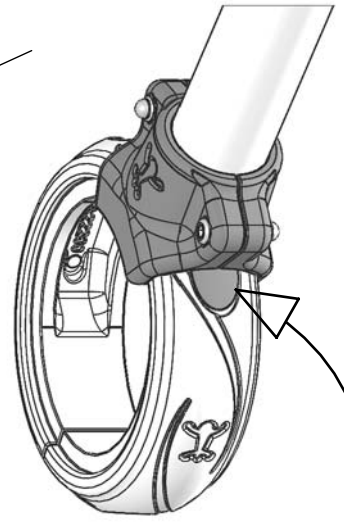
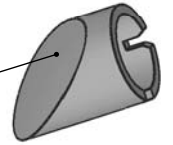


Réf	Qté
LA22201xx	2
LI52101	1
VBTR6x25	2
VEFBM6	2



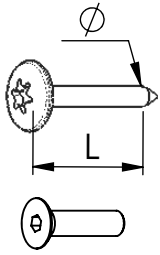


MI2508VX



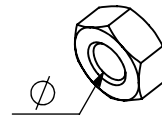


SA37XX → **G37XX**

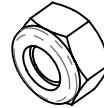


VBT 6 x 30
 \varnothing \uparrow L (mm)

VFHC



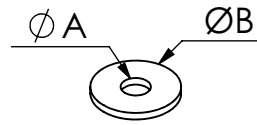
VEC M10
 \varnothing




VEF




VEB



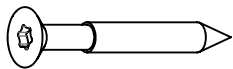
VR6x18
 $\varnothing A$ $\varnothing B$



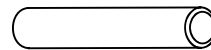
1000 - 1800 tr/min
 Vitesse de rotation
 Rotation speed



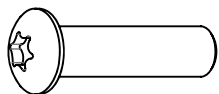
14 N.m
 Couple de rupture
 Torque of break



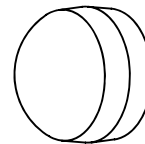
VWT



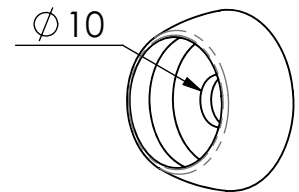
VGC



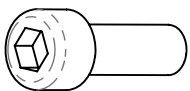
VCBHC



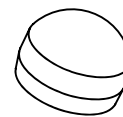
M10 440N



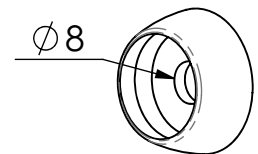
M10 310 N



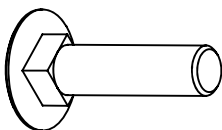
VBTR



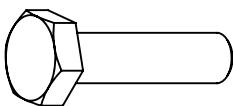
M8440N



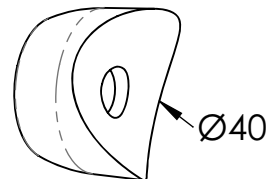
M8310N



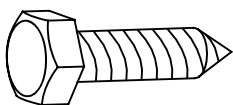
VTRCC



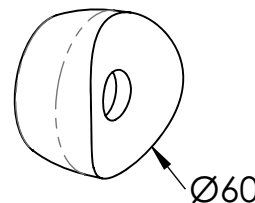
VTH



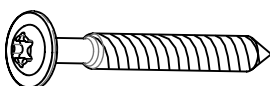
MI2503



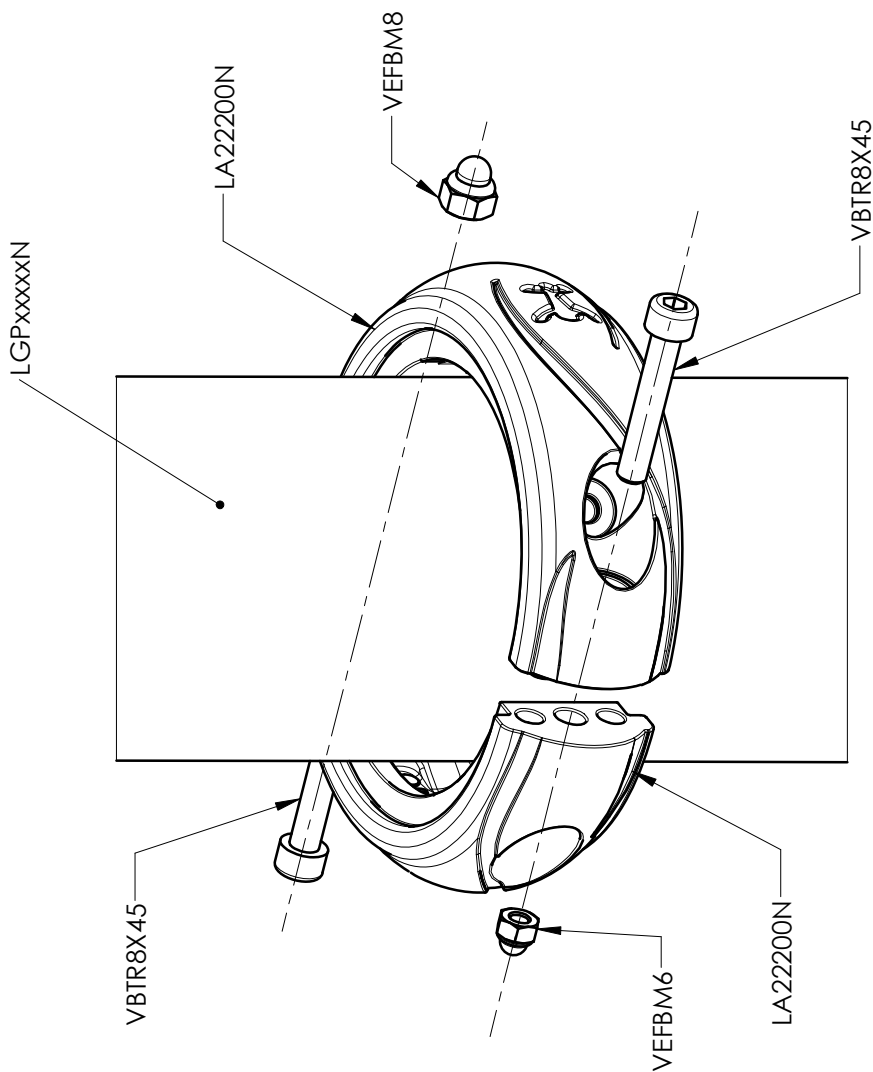
VTF



MI2701



VBT



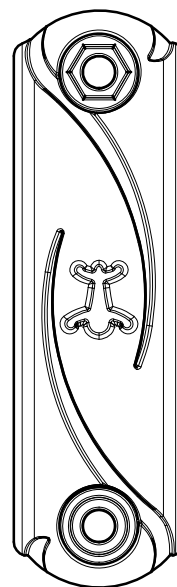
Réf	Qté
LA22200N	2
VBTR8X45	2
VEFBM8	2
MI2508N	4



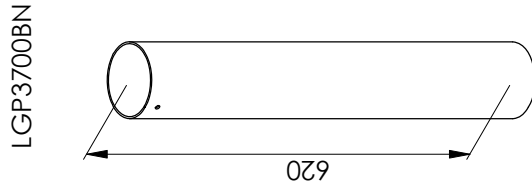
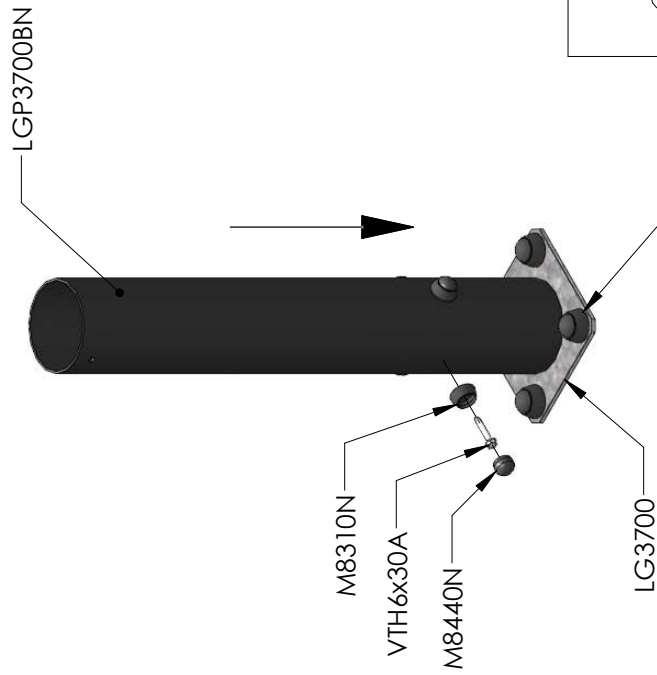
VBTR8X45



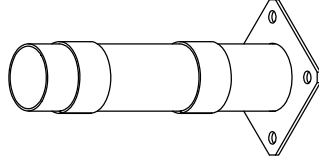
VEFBM8



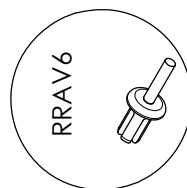
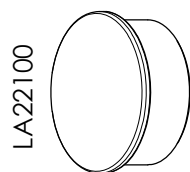
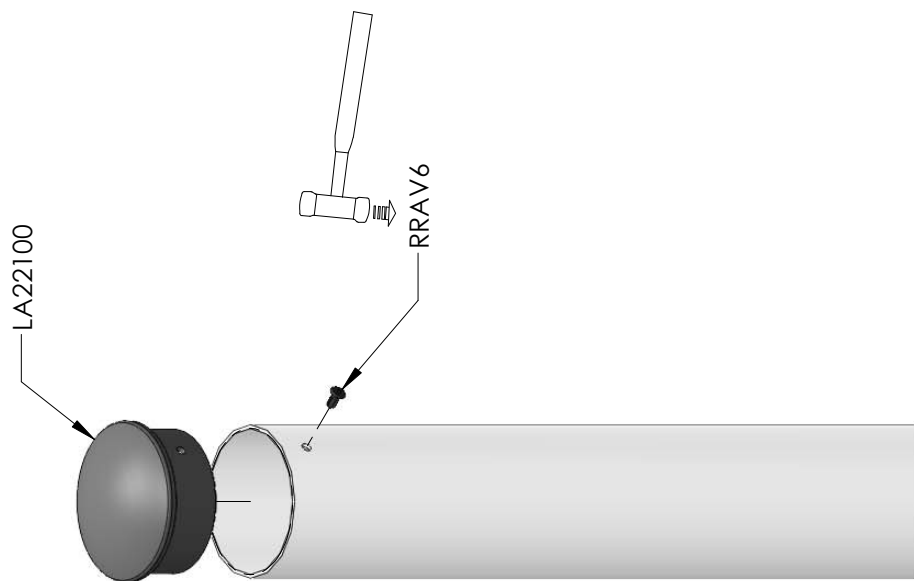
LA22200N



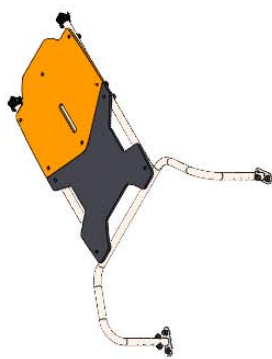
LG3700



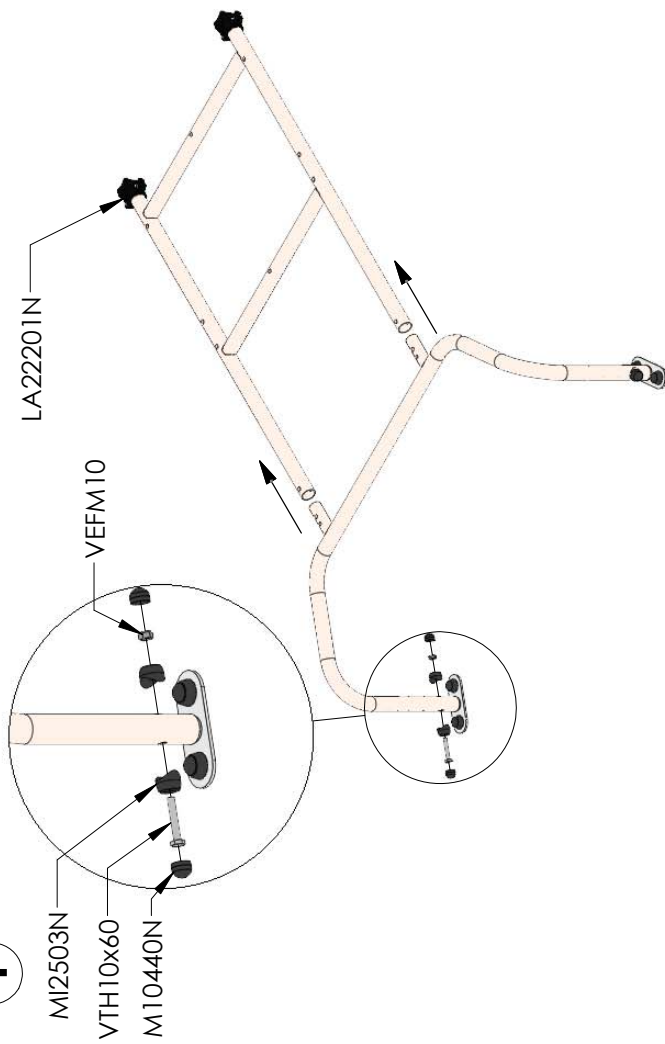
Réf	Qté
LGP3700BN	1
LG3700	1
RD14M10	4
M10310N	4
M10440N	4
M8440N	4
M8310N	4
VTH6x30A	4



Réf	Qté
LA22100	1
RRAV6	1



1



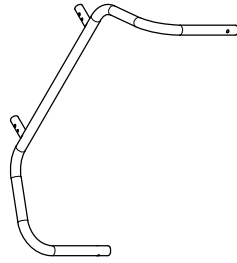
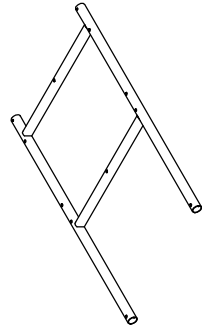
MI2503N
VTH10x60
M10440N

LA22201N

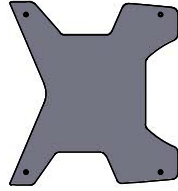
VEFM10

LI37126

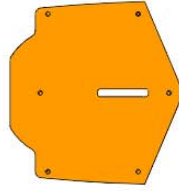
LI37129



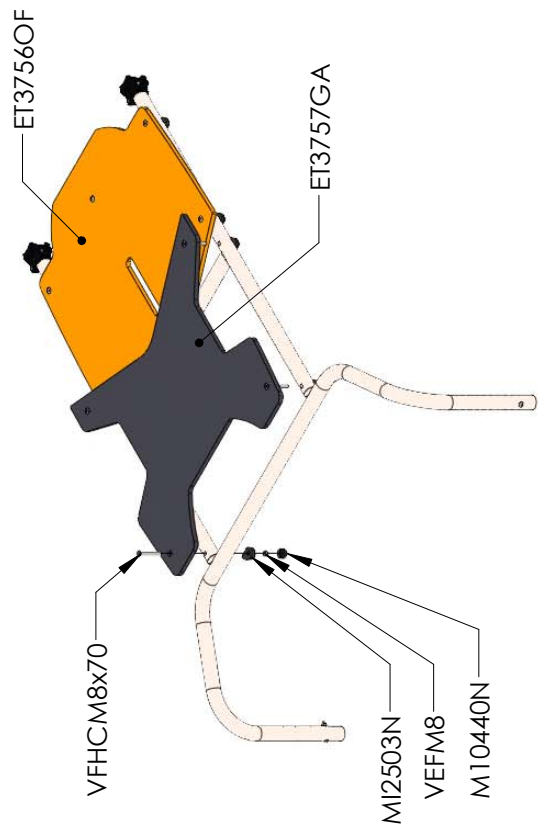
ET3757GA



ET3756OF



2



VFHCM8x70

MI2503N

VEFM8

M10440N

ET3756OF

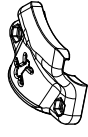
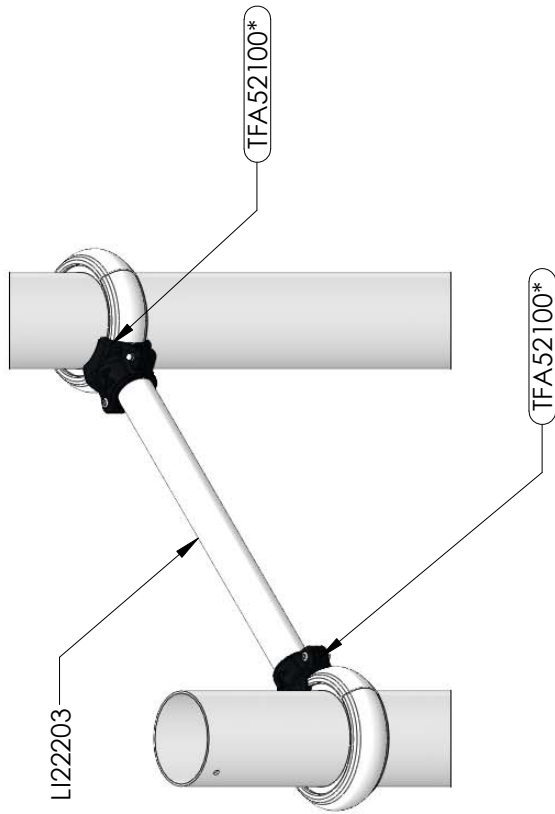
ET3757GA

LG4503

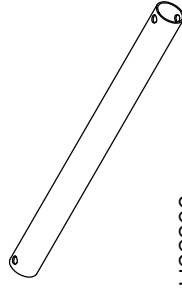


LA22201N

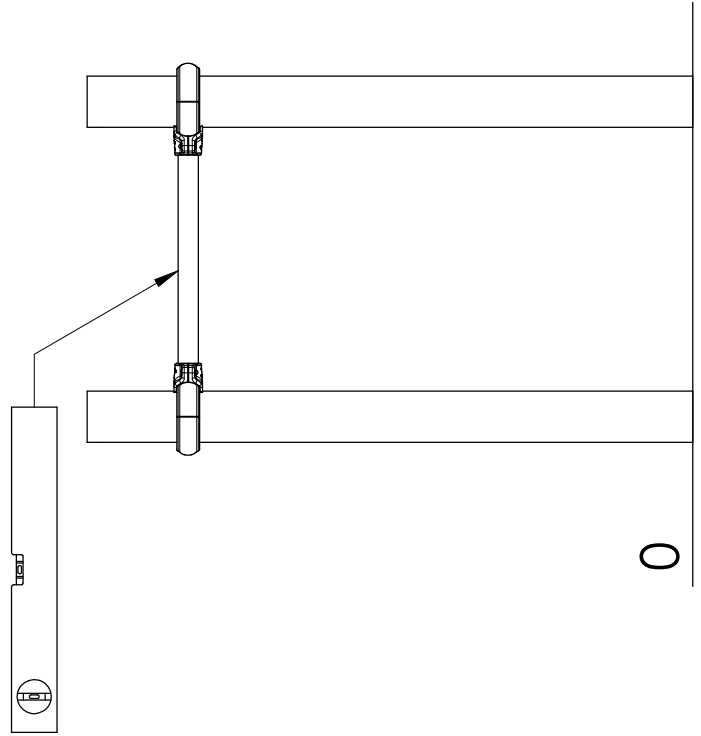
Réf	Qté
ET3756OF	1
ET3757GA	1
LA22201N	4
LG4503	2
LI37126	1
LI37129	1
M10310N	4
M10440N	18
MI2503N	14
RD14M10	4
VBTR6x25	4
VEFBM6	4
VEFM8	10
VEFM10	2
VFHCM8x70	10
VTH10x60	2



LA22201N



LI22203



0

Réf	Qté
LA22201N	4
LI22203	1
VBTR6x25	4
VEFBM6	4